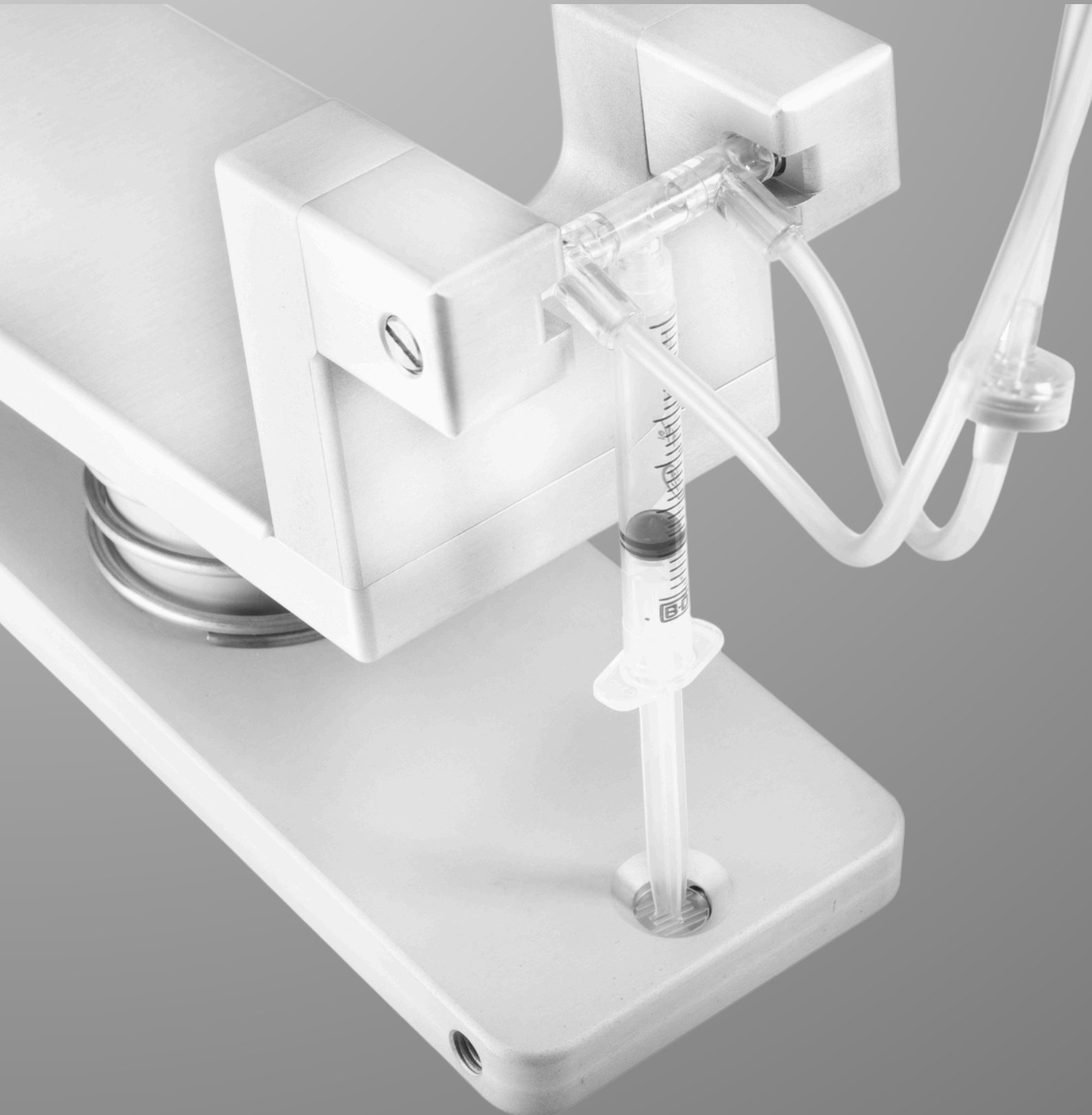


# Peditrol

Because your hands are your greatest tools.



## THE NEED FOR IRRIGATION

Ureterorenoscopy, whether rigid or flexible, can be made easier if suitable irrigation is provided.

Irrigation during endoscopy helps to maintain a clear visual field by displacing blood, stone fragments, and cellular debris. Inadvertent effects, such as stone migration caused by pressurised irrigation can complicate ureterorenoscopy but are easily avoided with the use of Peditrol.

## FOOT OPERATED IRRIGATION SYSTEM

Irrigation produced by Peditrol clears the visual field instantly. The flow is effective even when the laser fibre or basket is loaded in the working channel and the scope is fully flexed. As a low volume system, it is less likely to subject the kidneys to excessive intrarenal pressures. Peditrol is operated by foot, leaving both hands free for stone manipulation.

## ADVANTAGES OF THE PEDITROL



### LOW VOLUME

The device limits the irrigation bolus size to below 2.7ml and limits the overall amount of fluid used during the procedure.



### LESS COMPLICATIONS

**Has the ability to reduce intrarenal pressure.**  
Reduced risk of pyelo-tubular and pyelo-venous backflow, and reduced risk of oedema, sepsis, pelvic pain and SIRS.



### FOOT-OPERATED CONTROL

As the surgeon controls irrigation using his foot, **there is no need for assistance.** Less chance of stone migration during surgery thanks to instant and precise fluid displacement.

# **DUAL FLOW:**

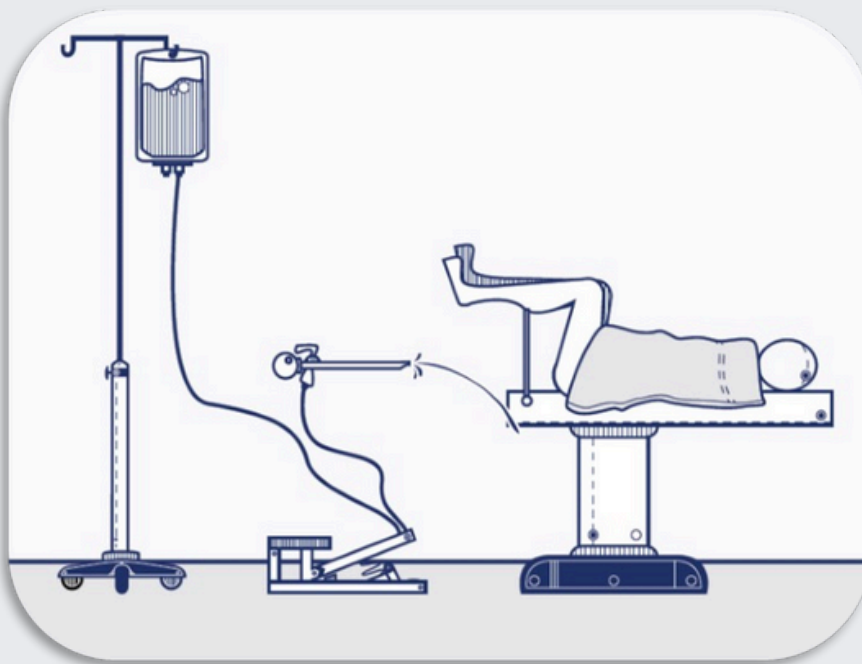
## **THE CORRECT FLOW FOR ALL APPLICATIONS**

The device is capable of producing dual flow by:

- Continuous background flow regulated by hydrostatic pressure (proportionate to the height of the bag with fluid above the patient's level).
- Accelerated flow dependent on the force applied by the urologist to the foot pedal.

### **CONSTANT BACKGROUND FLOW**

When the irrigation fluid bag is suspended high above the patient's level, a continuous flow through the ureterscope is effected (high hydrostatic pressure). The flow can be increased by the use of the foot pedal.



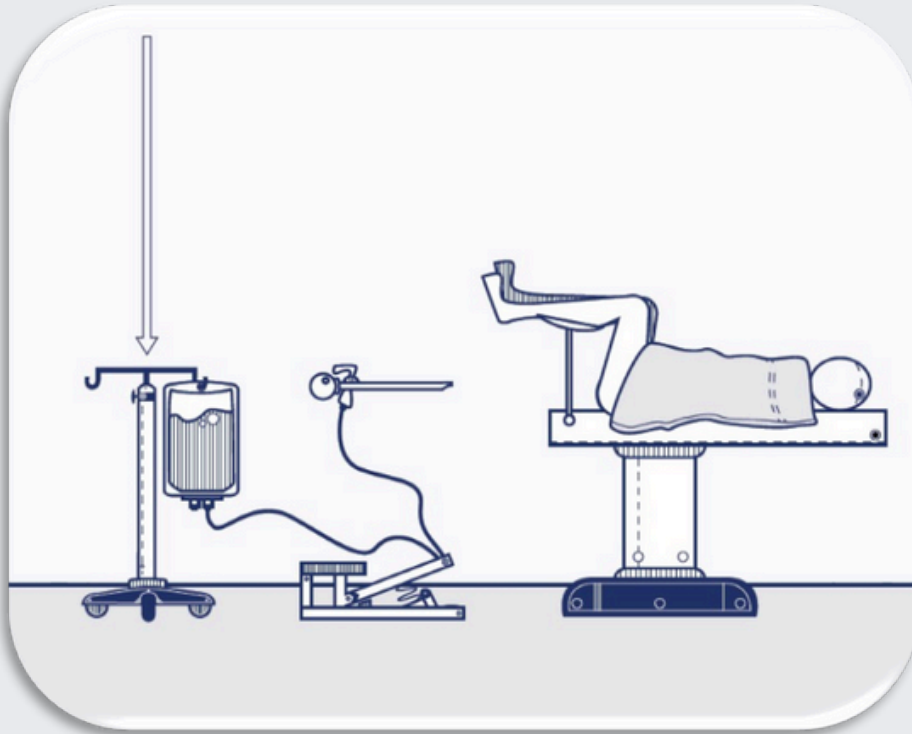
### **HIGH FLOW UNDER CONTROL**

Superb visibility with fully flexed device and working channel loaded with laser fibre or basket.



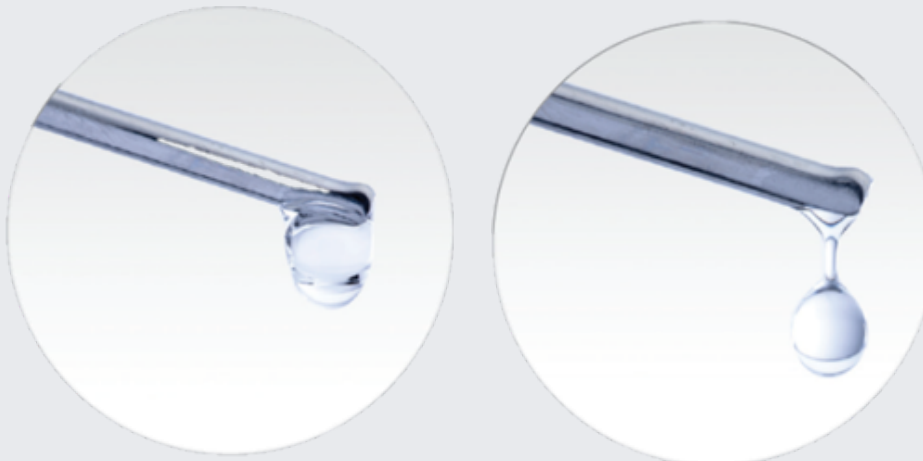
## ON DEMAND FLOW

When the irrigation fluid bag is suspended at the patient's level, there is no background flow at all. The only flow will be due to operation of the foot pump effecting highly controllable irrigation as small as a single drop.



## SENSITIVE ENOUGH TO DISPLACE A SINGLE DROP

When approaching an unstable ureteric stone with a rigid ureteroscope, a very precise, drop by drop irrigation control can be achieved.



## IRRIGATION SYSTEM FOR URETERORENOSCOPY

Product Code	Description	Qty
URO 002	Foot Pump V-16 for Ureterorenoscopy	1
URO 041	Peditrol Irrigation System for Ureterorenoscopy	10



Wismed CC  
71 Princess Alice Avenue,  
Durban, 4001, South Africa  
+27 31 206 0177  
orders@wismed.co.za  
www.wismed.co.za



Wismed PL Sp. z o.o.  
ul. Wielka 31/2,  
53-338, Wrocław, Poland  
+48 882 592 872  
biuro@wismedpl.com  
www.wismedpl.com



TNMC Devices (Llc)  
Ulica Franje Krezme 1  
10000 Zagreb, Croatia  
Tel: +38 59 1622 9658  
Email: tnmchr@tnmc.biz

